



SKYTRAK 6042

UPPER VALLEY EQUIPMENT RENTALS

INC

8 BRIDGE ST., W. LEBANON, NH 03784
603-298-8744



\$425 - Day Rental
\$1100 - Week/5 Days
\$2900 - Month/30 Days
***Delivery not included**

*Pricing subject to change

Overview

The JLG Skytrak telescopic boom lift can do the job that a conventional fork-lift cannot. The 6042 has a lifting capacity of 6000 pounds with a reach of 28 feet and 42 foot height. This telehandler is an effective way of placing heavy loads from the ground to elevated positions on the job site.

Dimensions

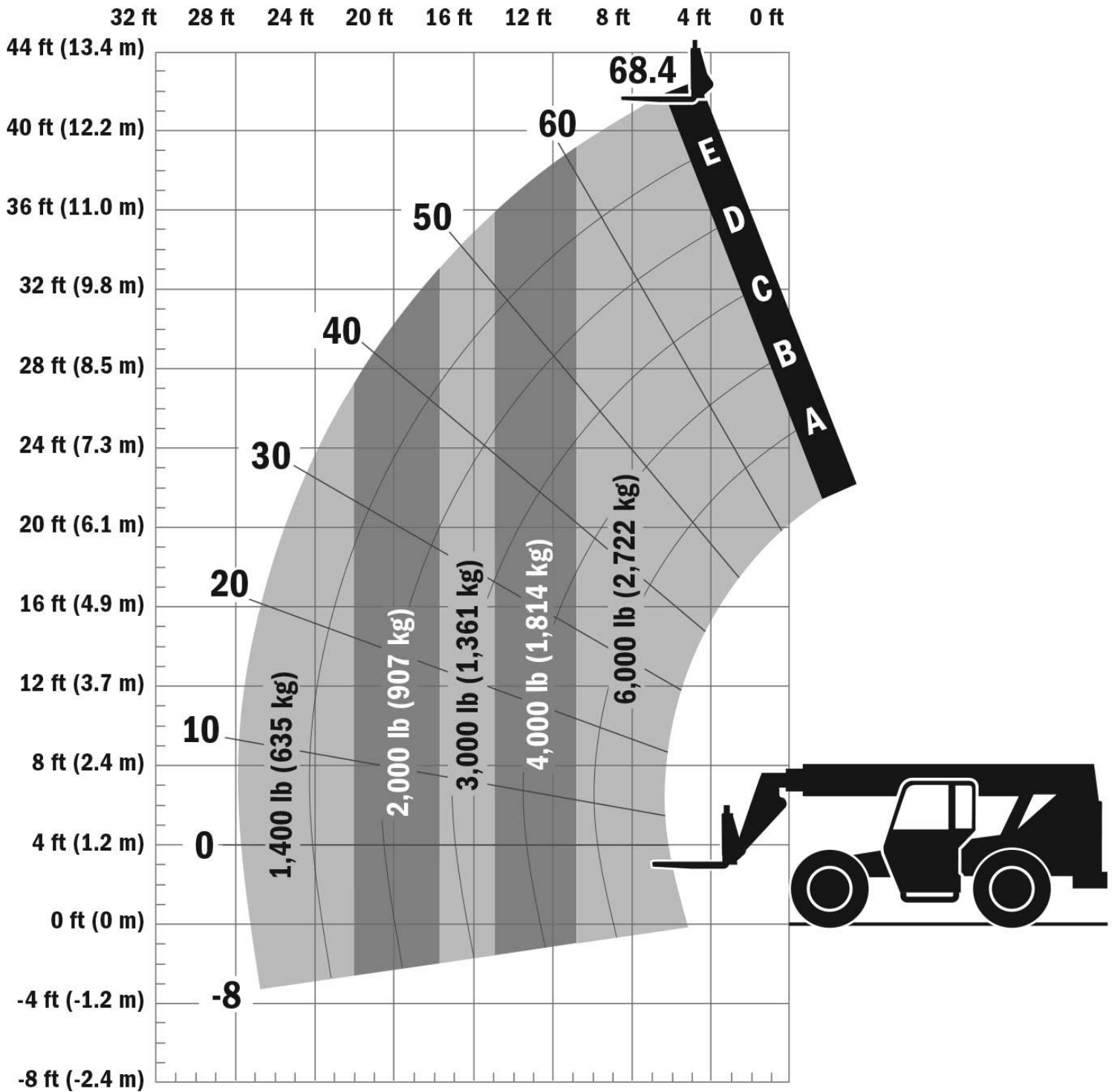
Ground clearance	1'4"
Machine height	8'6"
Machine length	18'4"
Machine width	8'3"
Tire size	370/75-28
Track width	7'
Wheelbase	7'5"
Height stowed	8'3"
Length stowed	31'1"
Width	8'2"
Wheelbase	8'1"
Ground clearance center	1'5"
Height under counterweight	3'4"

Power Source

Capacity fuel tank (diesel)	38 gal.
Horsepower	99 hp
Max engine RPM	2600 rpm

Performance

Breakout force	24,500 lb.
Drawbar pull	20,500 lb.
Frame leveling	10°
Lift capacity @ full height	6,000 lb.
Lift capacity @ max reach (stabs up)	1,400 lb.
Load center	2'
Maximum lift capacity	6,000 lb.
Maximum lift height	41'11"
Maximum reach	27'11"
Outrigger/stabilizers	No
Outside turning radius	13'9"
Speed-maximum lift	17 sec.
Speed-maximum lower	13 sec.
Speed-maximum telescope IN	19 sec.
Speed-maximum telescope OUT	19 sec.
Speed-maximum travel	20 mph



WARNING: This product can expose you to chemicals including engine exhaust (including diesel engine exhaust when equipped), lead and lead compounds, mineral oils, soots, phthalates, and carbon monoxide which are known to the State of California to cause cancer and birth defects or other reproductive harm. For more information go to www.P65Warnings.ca.gov.

Certain specification(s) are based on engineering calculations and are not actual measurements. Specification(s) are provided for comparison purposes only and are subject to change without notice. Specification(s) for your individual equipment will vary based on normal variations in design, manufacturing, operating conditions, and other factors.